

The Chillingworth Auction

October 19 & 20, 2018

1300+ lots

Onsite - Unreserved
Scenery Hill, PA

Amelia Jeffers, Auctioneer

740.815.7016

with Frio, Stack & Associates

304.233.3168

TheChillingworthAuction.com
chillingworth@ameliajeffers.com

Preview:

October 18, 10 am – 7 pm

October 19, 8 am – 9 pm

October 20, 8 am – 10 am

Preview party and champagne toast: October 19, 7 pm

Auction:

The 57 Year Personal Collection and Inventory of

Peter Chillingworth and his wife, Kathryn (Cappy) of Scenery Hill, Pennsylvania

Featuring a wonderful assemblage of Americana with an enthusiasm for furniture and decorative arts from the Queen Anne, Chippendale, and Federal periods and an emphasis on important objects from Western Pennsylvania region.

Over 1300 lots - too many items to list here:

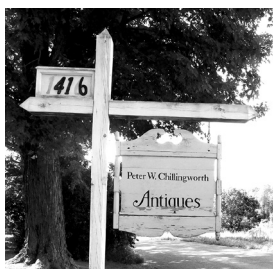
Furniture highlights: Fine vine-inlaid drop front desk in untouched condition (ex-Charles Momchilov); Scenery Hill, PA, walnut corner cupboard with St. Andrew's Cross on lower door; Group of American tall-case clocks including rare Alexander Cook (Canonsburg, PA) in walnut with ebonized moldings; Thomas Hutchinson inlaid cherry, and heavily inlaid walnut Thomas Gorgas marked Mt. Pleasant (Westmoreland County), plus others; Philadelphia Queen Anne diminutive lowboy; important Philadelphia Queen Anne shell-carved side chair with trifed feet in untouched condition; rare Maryland or northeastern Virginia Chippendale shell-carved side chair with ball and claw feet; Several mid-18th-century low-back Windsors, all Philadelphia-area; Good blanket chests including early decorated

examples and a walnut with sulphur inlay from Lancaster dated 1799 with drawers and remnants of a bright and colorful decorated fraktur pasted on the underside of the lid; A selection of birdcage tea tables and candlestands including several with dish tops; Chippendale walnut stepback cupboard in old finish; plus an assortment of chests, drop-leaf tables, stands, chairs, benches, and more.

Smalls to include extensive collection of fine and important 16th-, 17th-, and 18th-C. brass candlesticks; Pottery and porcelain including delft, feather (shell) edge, canary, transferware (including Pittsburgh views among many others); large group of Liverpool pitchers including American scenes with eagles, Masonic, George Washington, etc.; iron including western Pennsylvania utensils (Westmoreland or Somerset County) with incised decoration; coin silver with a focus on southwestern Pennsylvania early 19th-C. makers; extensive early blown and cut glass collection focusing on western Pennsylvania, with New Geneva-type glass selection predominantly in aqua of pitchers, tumblers, pans, bowls, flasks, bottles, flaps, vases; textiles and more.

Artwork featuring: a collection of Western PA art highlighted by oil on canvas landscapes by George Hetzel and W.C. Wall; a stunning Malcolm Purcell portrait "The Reader" (exhibited in The Carnegie International in 1934); Dorothy Davids; A. Bryan Wall; and more. 18th-, 19th-, and 20th-C. oils on canvas, watercolors, and paintings on board. Folk art includes two by Jacob Maentel.

Large collection of 19th- and early 20th-century hand tools to include period manufactured treadle lathe, early molding planes, work benches. Period lumber.



Terms:

10% Buyer's Premium Friday (15% online),
15% Buyer's Premium Saturday (20% online)

3% fee for credit card

Online bidding at invaluable.com and auctionzip.com